

TO: ALL PLANHOLDERS
FROM: CARL L. COOK, P.E., PROJECT ENGINEER *CLC*
PROJECT: MAPLETON CITY SECONDARY WATER SYSTEM, PHASE 1
DATE: APRIL 21, 2011
SUBJECT: ADDENDUM NO. 2

ADDENDUM NO. 2 for the Mapleton City Secondary Water System, Phase 1 has been issued and is attached for your information in preparing your bid for the PROJECT. The ADDENDUM consists of 5 items with applicable attachments. The Addendum will also be posted on the Mapleton City website at mapleton.org.

Receipt of ADDENDUM NO. 2 must be acknowledged in Paragraph 4.1 ADDENDA of Document 00 41 00 BID FORM which will be submitted with your bid. Failure to acknowledge receipt of this Addendum will cause the bid to be considered Non-Responsive.

**MAPLETON CITY SECONDARY WATER SYSTEM, PHASE 1
ADDENDUM NO. 2**

Date: April 21, 2011

Bid Date: April 26, 2011

Bid Time: 2:00 p.m. MDT

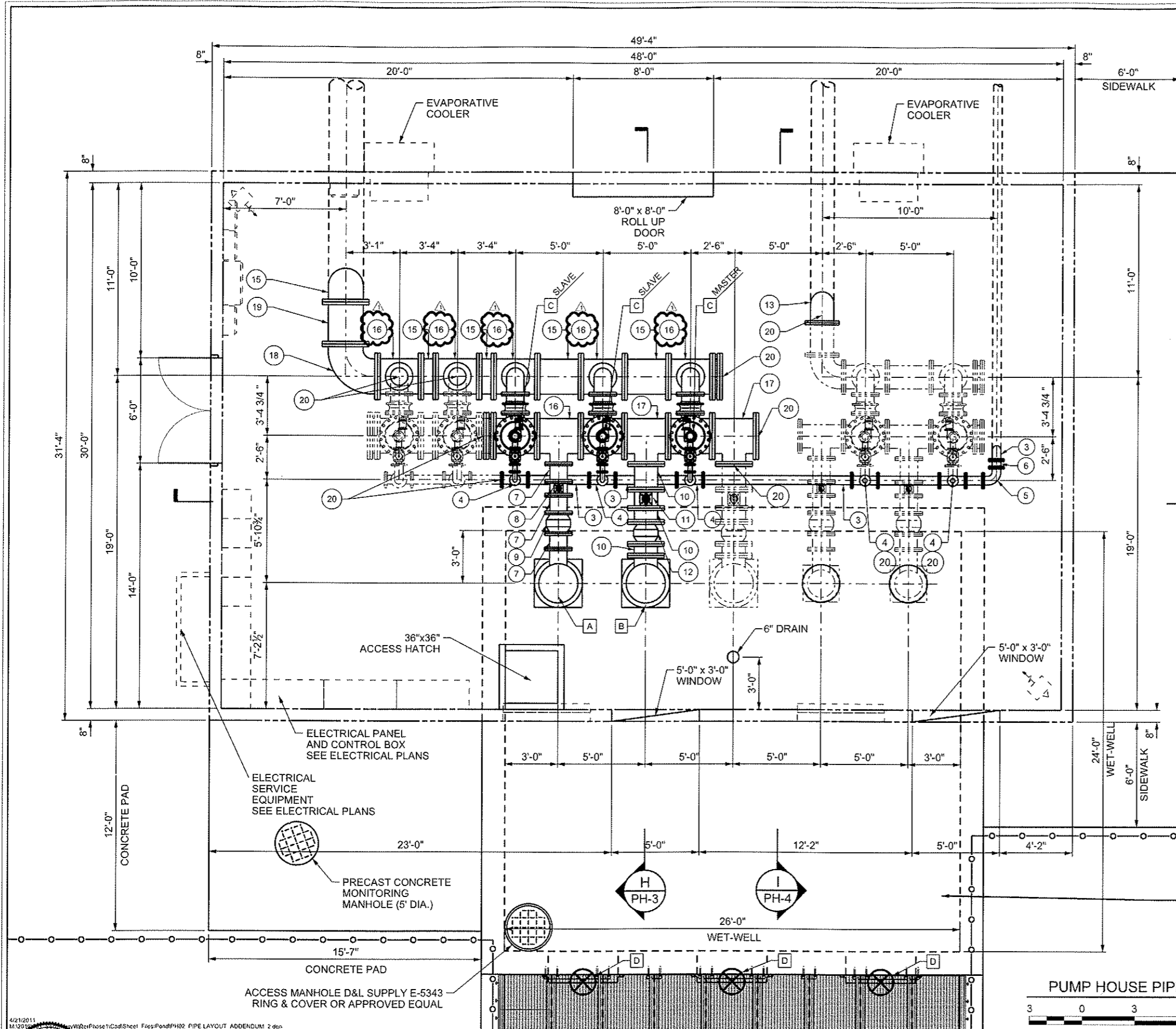
Addendum Items:

1. Bid Date and Time: NO CHANGE
2. DOCUMENT 00 43 00 BID SCHEDULE: Make the following minor changes to the BID SCHEDULE:
 - BID ITEM 21: 24-Inch Butterfly Valve with Cast Iron Valve Box.
Change the quantity for this item from '3' to '2'.
 - BID ITEM 28: Change the description for this Item to the following:
"CONNECT NEW 12" PIPE TO EXISTING 12" PIPE, DETAIL 20,
SHEET DT-4"
3. DOCUMENT 00 73 10 SUPPLEMENTARY CONDITIONS TO THE GENERAL CONDITIONS: Add the following to this document:

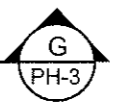
"PART 6.16 of the GENERAL CONDITIONS is hereby amended to include the following:

 - E. The Contractor's GENERAL WARRANTY AND GUARANTEE for this project is agreed to be ONE (1) YEAR from the date of final acceptance of the project, unless otherwise specified and mutually agreed upon elsewhere in this contract.
4. PLAN SHEETS PH-2 AND PH-3: Replace Sheets PH-2 and PH-3 of the Contract Drawings with the Revised Sheets PH-2 and PH-3 attached to this ADDENDUM No. 2. The Revisions modify the size of some manifold fittings and clarify piping in the Pump Station which connect to the Self-Cleaning Filters.
5. SECTION 22 11 23 WATER PUMP: Amend this Section as follows:
 - Paragraph 2.8.C: Flowserve brand pumps are considered as an approved equal subject to the design requirements specified.
 - Paragraph 2.8.H.1: Motor shall be rated for a minimum elevation of 4900 feet msl.

END OF ADDENDUM



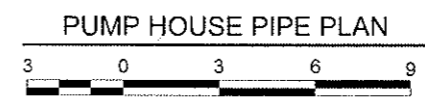
LEGEND	
SYMB	DESCRIPTION
1	3" DUCTILE IRON PIPE
2	3" 90° ELBOW
3	6" DUCTILE IRON PIPE
4	6"x6"x3 TEE
5	6" 90° ELBOW
6	6" 45° ELBOW
7	12" DUCTILE IRON PIPE
8	12" BUTTERFLY VALVE
9	12" CHECK VALVE
10	16" DUCTILE IRON PIPE
11	16" BUTTERFLY VALVE
12	16" CHECK VALVE
13	16" DUCTILE IRON PIPE
14	16" 45° ELBOW
15	24" DUCTILE IRON PIPE
16	24"x24"x12" TEE
17	24"x24"x16" TEE
18	24" 90° ELBOX
19	24" 45° ELBOW
20	BLIND FLANGE
SYMB	DESCRIPTION
A	PUMP: HYDROFLO 12HC (6 STAGE)
B	PUMP: HYDROFLO 18HH (3 STAGE)
C	FILTER: AMIAD EBS 10000 (12") 200 MICRON SCREEN
D	SLUICE GATE: WATERMAN SERIES 4,000



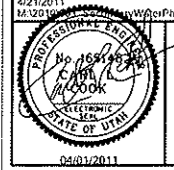
----- FUTURE PIPING

WET-WELL 29
WW-1

PUMP HOUSE PIPE PLAN 28
PH-1



4/21/2011 10:20 AM \\Phase1\Code\Sheet Files\PH02_PIPE_LAYOUT_ADDENDUM_2.dgn



RB&G
ENGINEERING, INC.

1435 WEST 820 NORTH
PROVO, UTAH 84601-1343
801 374-5771
801 521-5771

NO.	AUTHORIZED BY	REVISION	MADE BY	DATE
1	CLC	ADDENDUM NO. 2	JR	4-21-11

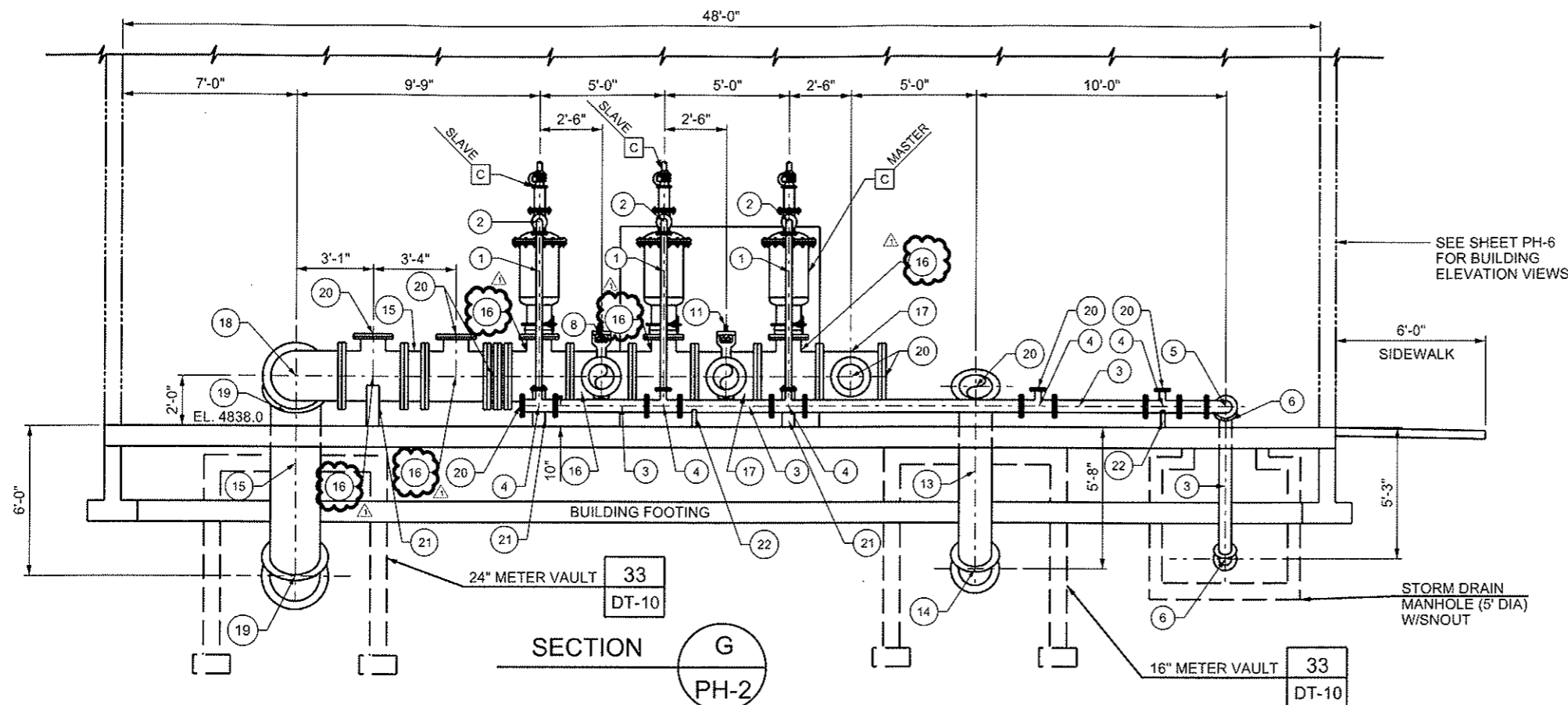
DESIGNED BY: CLC
DRAWN BY: J. RUSBY
CHECKED BY: CLC
SCALE: VERT
DATE: APR 1, 2011

MAPLETON CITY
UTAH

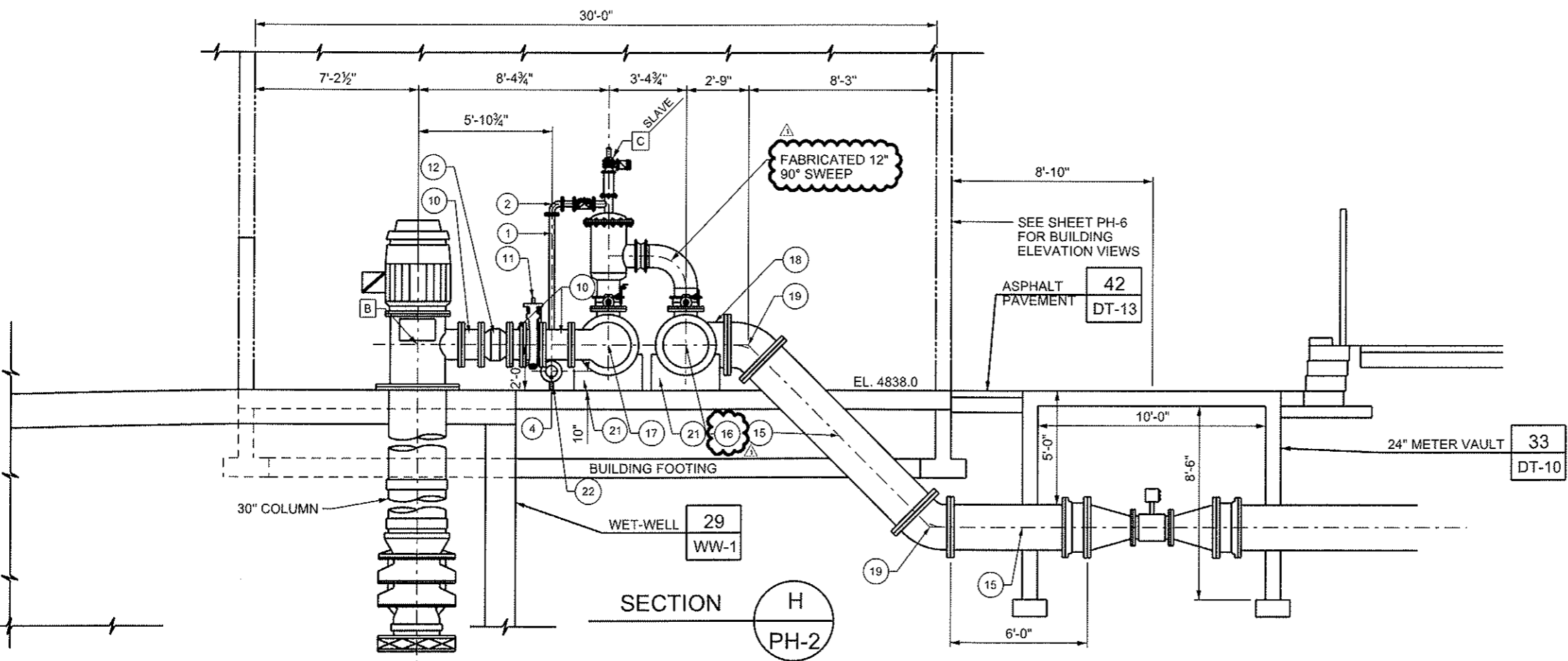
SECONDARY WATER SYSTEM
PHASE I

PUMP HOUSE
PIPING LAYOUT

201005-001
PROJECT NO.
SEE PROJECT FILE
FILE GRAND PLOT
SHEET PH-2
58 of 111 SHEETS



LEGEND	
SYMB	DESCRIPTION
1	3" DUCTILE IRON PIPE
2	3" 90° ELBOW
3	6" DUCTILE IRON PIPE
4	6"x6"x3 TEE
5	6" 90° ELBOW
6	6" 45° ELBOW
7	12" DUCTILE IRON PIPE
8	12" BUTTERFLY VALVE
9	12" CHECK VALVE
10	16" DUCTILE IRON PIPE
11	16" BUTTERFLY VALVE
12	16" CHECK VALVE
13	16" DUCTILE IRON PIPE
14	16" 45° ELBOW
15	24" DUCTILE IRON PIPE
16	24"x24"x12" TEE
17	24"x24"x16" TEE
18	24" 90° ELBOW
19	24" 45° ELBOW
20	BLIND FLANGE
21	CONCRETE PIPE SUPPORT
22	PIPE SUPPORT
SYMB	DESCRIPTION
A	PUMP: HYDROFLO 12HC (6 STAGE)
B	PUMP: HYDROFLO 18HH (3 STAGE)
C	FILTER: AMIAD EBS 10000 (12") 200 MICRON SCREEN
D	SLUICE GATE: WATERMAN SERIES 4,000



4/21/2011 14:02:11 \\proj\Phase1\Cad\Sheet_Files\Pond\PH03_ADDENDUM_2.dgn



RB&G
ENGINEERING, INC.

1435 WEST 820 NORTH
PROVO, UTAH 84601-1343
801 374-5771
801 521-5771

NO.	AUTHORIZED BY	REVISION	MADE BY	DATE
1	CLC	ADDENDUM NO. 2	JR	4-21-11

DESIGNED BY: CLC
DRAWN BY: J MERRY
CHECKED BY: CLC
SCALE: 1/8" = 1'-0"
DATE: APR 1, 2011

MAPLETON CITY
UTAH

SECONDARY WATER SYSTEM
PHASE I

PUMP HOUSE PIPING
SECTIONS & DETAILS

201006-001
PROJECT NO.
SEE PROJECT FILE
FILE DRAWING
SHEET PH-3
59 of 111 SHEETS