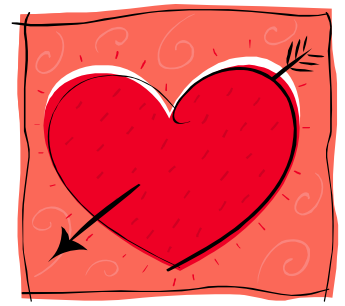


**MAYOR:**  
LAUREL BRADY

**COUNCIL MEMBERS:**  
BEN CHRISTENSEN  
MICHAEL COBIA  
MICHAEL NELSON  
ANN H. TOLLEY  
BRIAN J. WALL



## Mayor's Message

Mapleton residents have a long tradition of volunteer service. Not only do our citizens willingly serve on various boards and commissions, but they have contributed in a variety of other ways over the years. In fact, in the decade following World War II, Mapleton residents were heavily involved in fundraising projects aimed at refurbishing the Veterans Memorial Hall and constructing a city building/fire station at the corner of Maple Street and Main Street. One of the projects undertaken for this effort was the farming of ten acres near the highway. Many of Mapleton's men worked long hours in those fields raising crops such as barley and peas, while the ladies of the town supported them by bringing meals and cold drinks as they worked in the fields. All proceeds from the harvest, and proceeds from fundraisers such as dances and dinners, went directly into the building fund, and the building itself was constructed almost exclusively by volunteer labor and expertise.

The tradition continues even now, with thousands of hours donated to the city each year for our July 24 celebration, to our recreation and Senior Citizens' programs, our literacy program, our governing bodies, and a variety of other functions. Even our mayors and city council members for many years served with little or no compensation, and many of those who received salaries often donated them back to city programs.

One former resident in particular who served the city at great personal cost was the late Wendell Johnson. In the 1980's, Wendell, a quadriplegic, served as Justice of the Peace and later as Mayor, in spite of his enormous physical challenges. Wendell wrote a history of Mapleton, which is available in our library. He was an amazing artist, and even now he continues to serve the city, as stunning examples of his artwork hang on the walls of the Community Center and in churches around town. (You can see Wendell's artwork and read about his life at a website maintained by his daughter at [www.wendelljohnson.com](http://www.wendelljohnson.com)) Wendell remains a fine example of the volunteer tradition so many of our residents emulate.

## City Newsletter

**February 2008 Edition**

Another very recent example is Bernie Engle, who served for many years on our Board of Adjustment. Health problems have suddenly forced his resignation, but we greatly appreciate the fine service he gave to the city for so long.

In recent weeks, a number of residents stepped up to fill vacancies on our Planning Commission, Board of Adjustment, our Transportation Committee, and to serve in other challenging positions throughout the city. We are grateful to all of them.

But the city continues to need volunteers, and has a particular need at this time for help in our library as we prepare to form our own independent city library. We also have needs on committees undertaking a variety of projects around town, and our Literacy Center almost always needs more volunteers. If you would like to follow in the tradition established by so many for so long, please contact our City Administrator, Bob Bradshaw at 489-5655.

### City Calendar

Feb. 6	7:00pm	City Council Meeting
Feb. 14	11:30am	Senior Citizen Potluck Luncheon
Feb. 18		City Offices Closed - <i>Presidents Day</i>
Feb. 20	7:00pm	City Council Meeting
Feb. 28	6:30pm	Planning Commission Meeting

Museum Tours call:

489-6714, 491-6676, or 489-7786

Calendared City Meetings are held at the Community Center Building, 125 West Community Center Way (400 North). City Council Meetings are held the first and third Wednesday of each month. For more information about City Meetings contact 489-5655. **Agendas, Minutes, Public Notices and the Newsletter are available on the City website at [www.mapleton.org](http://www.mapleton.org).**

## Kindergarten Registration

Mapleton kindergarten registration for both Mapleton & Hobblecreek elementary schools will be held on March 18, 2008 from 8 am to 4 pm.

## Garbage Pick-up

Several people have missed the pick-up by not having their garbage out early enough. Remember that we get different drivers, and they do routes differently periodically. All garbage should be out by 7 am so the truck can make sure to get yours picked up.

This year the holiday schedule for Allied Waste includes 2 Mondays. On those days we will not receive trash pick-up until Tuesday. They are Memorial Day on May 26, and Labor Day on Sept 1. All other weeks should be picked up on Monday, unless we notify you on your bill.

## Sons of Utah Pioneers

The Maple Mountain Chapter of the Sons of Utah Pioneers and their wives will meet at a local restaurant (yet to be determined) at 6:30 pm on Thursday, February 28<sup>th</sup>. After the meal, Lewis Pratt, a great-great grandson of Parley P. Pratt will give a presentation about Elder Pratt's 1849 expedition to Southern Utah. The public is invited. Contact Chapter President, Larry Adams, at 798-8198 for more details.

## Recreation

\*\*\*On-line registration for most programs available at: [www.mapleton.org/parksandrecreation.html](http://www.mapleton.org/parksandrecreation.html). If you have any questions concerning our recreation programs, please call our office at 806-9114, located in the Mapleton Community Center at 125 West 400 North, Mapleton Recreation Office Hours: Monday - Thursday 9:00 AM - 1:00 PM

### Shoot Out

All Mapleton City Recreation basketball girls and boys, grades 3<sup>rd</sup> – 8<sup>th</sup> are invited to participate in Mapleton City's **Shootout** on Saturday Feb., 16<sup>th</sup>, 9:00 am at the Mapleton Junior High School. Register at the Mapleton Recreation Office, 125 W 400 N, M-Th 9 am – 1 pm, or Shootout Entry Forms will be available at the MJHS and Hubble Creek Gyms during practices and games. It is free to Mapleton City Recreation participants. Entry deadline is Mon., Feb. 11th. If you have any questions, please call the Recreation Office, 806-9114.

### Stroller Fit

This class offers workouts and nutrition education for parents with small children. Parents have limited time; the key is to work out smarter, not harder. Expect a total body workout using your strollers, your own body weight, and resistance bands. A special Mommy/Daddy and Me time is incorporated so you learn exercises you can do with your little one. Bring your stroller and little ones. **Every child must be in a stroller seat.** Classes will begin in January on Monday and Wednesday mornings, 9:30 – 10:30 am at the Mapleton Community Center (125 W 400 N). Additional sessions will be offered each month thru May. Class size is limited-so hurry in to register. Register now at the Mapleton Recreation Office (125 W 400 N) or on-line @ [mapleton.org/parksandrecreation.html](http://mapleton.org/parksandrecreation.html). Fee is \$35.00/month.

## Recreation Continued

### Turbo Kick Box (TKB)

TKB was designed by both group fitness professionals and champion kick boxers. This provides the flavor of a kickboxing workout with the safety factor that relates to the general public. It is a floor routine without bag work. The class will be taught by Valerie Littleton, a certified TKB instructor who has been teaching fitness classes for over 20 years. The classes will be Mon. and Wed., 6:00 am at the Community Center (125 W 400 N). Fee is \$20.00 per month. (May be combined with Yoga for a multiple-class discount. Please call 806-9114 for details.)

### Yoga

Enjoy the benefits of yoga: increased strength, flexibility and muscle tone; mental focus; endurance; and reduced stress. Modified Ashtanga Yoga combined with Power Yoga classes will be taught by Valerie Littleton, a Yoga Alliance certified instructor who has been teaching fitness classes for over 20 years. The classes will be Mon. and Wed., 8:30 pm OR Tue., and Thur., 6:00 am at the Community Center (125 W 400 N). Fee is \$20.00 per month. (May be combined with Turbo Kick Box for a multiple-class discount. Please call 806-9114 for details.)

### R.A.D. (Rape Aggression Defense) for Women

A life skills and personal empowerment safety program for women (ages 14 to 112 years) of any physical fitness level. It will be taught by nationally certified R.A.D. instructors. Each student will receive a workbook and will be entitled to the free lifetime return and practice policy nation-wide upon graduation. Classes will be held at the Mapleton Community Center (125 W 400 N) on Feb. 7, 14, 21, 28 with simulations on Tues. March 4<sup>th</sup> and Thurs. March 7<sup>th</sup>. Classes will be from 6-9pm each Thursday. Please plan to attend all the classes to qualify for the lifetime return policy. Class size will be limited to 35 participants. Fee is \$40.00 (includes the manual).

### Boys Volleyball

For boys in 7<sup>th</sup>-12<sup>th</sup> grade. If interested, please call the Recreation Office at 806-9114. League would start mid-March.

### Baseball & Softball – 2008 Registration

Baseball & Softball registration will be held Wednesday, March 26<sup>th</sup>, 6-8pm at the Mapleton Recreation Office or on-line beginning March 17<sup>th</sup>. A late fee of \$10.00 will be charged after Thursday, March 27<sup>th</sup>.

### Youth Ballroom Dancing

Attention all teens!!! Come learn to dance!!! Ballroom dancing is the new cool! You will learn polka, cha-cha, waltz, swing, night club two step, fox trot, salsa and country dancing. Meet youth from all over Utah Valley!! Classes will be taught by BYU ballroom dance students two Saturdays a month for 3 months beginning in March at Mapleton's Memorial Hall (90 E Maple Street). Fee is 30.00. Email us at [utahvalleygroove@yahoo.com](mailto:utahvalleygroove@yahoo.com) or call 801-423-2287.

## Public Safety

### Winter Driving and Parking

It has been a couple of years since we have received this amount of snow on the ground. To avoid traffic accidents when the roads are snowy and slick we should slow down, keep more distance between the vehicles in front of us, do not be in such a hurry, and schedule more time to get where you are going.

Mapleton City would like to thank all of the citizens who moved their vehicles off the roads so our snowplows could plow. There are still a lot of vehicles being left parked on the road at nighttime. These vehicles will receive a citation along with a fine so please keep your vehicles off the roadway so we can keep our streets clear and safe.

### School Crossing Safety

We have had a couple of close calls recently with vehicles driving through the school crosswalk with the crossing guard still in the crosswalk. By Utah State law you **must** stop and wait until the crossing guard is completely out of the crosswalk before driving through. By driving through the crosswalk you are violating the law and will be cited. Let us keep our children and crossing guards safe by obeying the law.

### Paying Tribute

I would like to pay tribute to all the former police chiefs by posting their pictures and a bio of each of them on the wall in the entry way of our police department. If you know of or are a relative of a former Mapleton Police Chief please contact Chief Dean Pettersson at 491-8048.

### Water Jugs

Mapleton City received another shipment of the plastic water jugs. They are available for purchase for \$5.50 and the spouts are available for \$1.50. This is a good start to being prepared in case of an emergency.

## Water Conservation Project – Proposed Development

### New Reservoir to Supply Pressurized Irrigation Water

The City is preparing plans to move forward in the development of the existing disused pond located between Maple Street and Dogwood Drive. This major project will enable the city to provide pressurized secondary water throughout the whole of the city and will play a significant role in enabling the city to eliminate/minimize the use of culinary water for watering yards throughout the spring/ summer/fall seasons.

A model has been prepared showing how the reservoir will appear and will be on display in the main entrance lobby of the city hall during normal business hours to provide residents with a concept of the project.

It is intended the scheme will be constructed in two separate but inter-related phases to be paid for in part with the help of substantial grants available from the Utah State Department of Natural Resources and the Central Utah Water Project. A May/June commencement on the first phase is anticipated. In addition to making substantial reductions in culinary water usage, this much needed resource should reduce the monthly costs of yard watering incurred during hot weather. All residents are invited to take the opportunity to look at the model and submit any comments or concerns for the city to take into consideration.

## Senior Citizens

We need some volunteers to serve on the Mapleton Senior Citizens committee. We meet once a month and oversee the senior citizen's activities for Mapleton. If you are interested contact Dick Savage at 489-4180

### Computer News

For those interested in scanning pictures into the computer we have the flat-bed scanner available. Your pictures can be saved to a CD or flash drive. Scanning assistance is available M-W-F from 10:30 AM to 12:30 PM. The two senior's computers are downstairs in the library near the Literacy Center. Call Marilyn for more details. 489-5611

Instruction on Basic Computer Skills and Navigation is still available. Call Sallie Korman 489-8593 after 5 PM if you are interested. A "Basic Reference" sheet which covers most of the areas of instruction is available to give you an idea of what the class covers.



### Painting Class

To find out more information on Mapleton painting classes contact Lori Beckstrand at 489-9414.

### Tai Chi Class

Tai Chi Classes are provided by Drs. John and Joan Garrett every Wednesday from 8:30am-9:30am at the Mapleton Community Center.

### Potluck Luncheon

The next Senior Citizen Soup and Salad Potluck Luncheon will be on Thursday February 14<sup>th</sup> 11:30 am at the Mapleton Community Center. If you don't cook join us with a \$1 potluck donation. There will be a blood pressure, blood sugar and BMI (body mass index) measurement clinic at 10:30 am before the lunch. Contact Leah Gifford at 853-8022 for more details.

### Exercise Room

The Senior Exercise Room is open Monday thru Friday 8:30 to 11 am and 3 to 5:30 pm, Tuesday, Wednesday and Thursday evening it is open from 5:30 until 8 PM and Saturday from 10 am until noon. If you have any questions about the program please call 806-9128 (exercise room phone) when we are open. Please call Peggy Burt 489-4363 if you have any questions.

### Humanitarian Project

Our second annual humanitarian yard sale will be held at the Mapleton Community Center on Saturday March 15<sup>th</sup>. We will be taking donations at the center on Friday, March 14<sup>th</sup>.

## Public Works

### SNOW REMOVAL POLICY

#### OBJECTIVE

It is the goal and intent of Mapleton City to provide timely, efficient and cost effective winter maintenance, snow removal and ice control on the roadways of the municipality. This objective is assigned to the Public Works Department.

#### PROCEDURE

Due to many variables that are inherent in Utah weather, each storm and/or weather event may require slightly different efforts and/or emphasis on any number of maintenance tasks, which together, determine the overall winter maintenance, snow removal or ice control strategy.

#### LEVEL OF SERVICE

It is not possible to maintain snow and ice-free roads during a storm. It is the intention of Mapleton City to provide practical, safe access along city streets during winter storms. The Public Works Department shall plow all priority roads first, to provide the basic transportation system for public safety, schools, high volume streets, steep grades, etc. following a snowstorm of 2" or greater. Lower priority streets (inner subdivision streets), will be plowed next, areas which are prone to wind and drifting snow will receive priority. Remaining city streets, dead ends and cul-de-sacs are plowed last, traffic lanes only. Cul-de-sacs will be plowed 1 pass in and 1 pass out providing no cars are parked in the roadway. All operational decisions regarding pre-salting, scheduling or equipment operators and private contractors shall be based upon these goals.

It is the policies of Mapleton City, to have the operating crews of the Public Works Department begin snow removal operations upon accumulation of two inches of snowfall.

### *Contact Numbers*

Mayor:	489-5655	Library:	806-9127
City Council:	489-5655	Public Works:	489-6253
City Administration:	489-5655	Emergency:	911
Community Development:	489-6138	Dispatch Police,	
Building Inspection:	722-4839	Fire, Ambulance:	851-4100
Court:	489-7445	Non-emergency:	491-8048
Recreation:	806-9114	Newsletter:	806-9109

The Mapleton City Newsletter can be viewed at our website at [www.mapleton.org](http://www.mapleton.org).

## Public Works Continued

The Supervisor may, after consultation with the Public Works Director, at his/her own discretion based upon weather information reports, elect to not remove snow until greater or lesser accumulations occur. During nights and weekends, the Police Department shall notify the Supervisor or his/her on-call designee that road conditions warrant mobilization of snow removal or ice control activity.

#### HOW SNOW PLOWING WORKS:

The City has 6 snow plow trucks. Plowing will begin on the main, priority roads (following an accumulation of 2" or greater snowfall), followed by inner subdivision streets. Cul-de-sacs and dead ends streets are the last priority; however, we will strive to get to them as soon as possible. We will aim to have the main roads cleared within 24 hours of the end of any storm, and the inner subdivision streets, dead-end streets, and cul-de-sacs within 72 hours.

The snow plows are designed to push the snow from the center line of the road to the edge of the road. This sometimes creates a problem with blocking driveways and mailboxes. Please be aware that it is the resident's responsibility to clear the snow from in front of their driveway and mailbox to ensure mail delivery.

Also, no snow or ice removed from private property shall be deposited in the public ways, and include the following:

1. Pushing or carrying and depositing snow or ice on a public right-of-way or sidewalk.
2. The blowing of snow or ice into a pedestrian or vehicle travel lane.

#### PLEASE NOTE:

It is not the position of Mapleton City to maintain a bare pavement policy or to provide snow and ice removal on every city street during or after every snow storm. Therefore, after periods in which the movement of traffic has occurred, snow plows are not as effective for totally clearing packed snow or icy roadways, except to remove loose material on top.

The Public Works Office is open Monday – Friday (excluding holidays) from 8 a.m. to 4:00 p.m. and can be reached at: 489-6253.

